

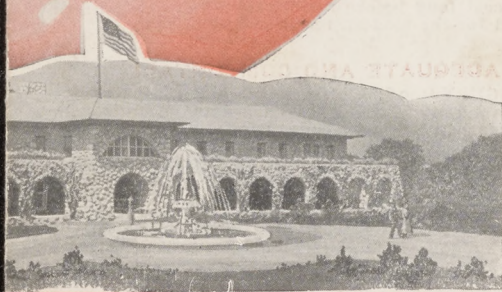
c. Roeg

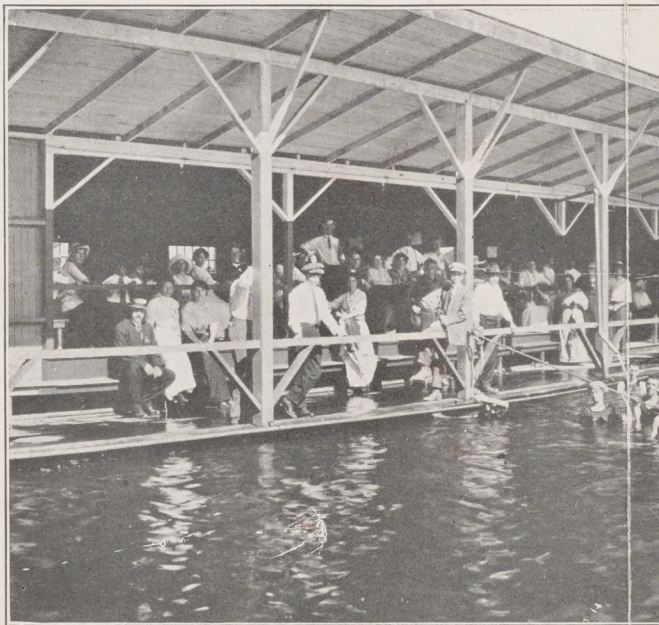
# AGUA CALIENTE SPRINGS

ONLY 45 MILES  
FROM SAN FRANCISCO

IN THE  
VALLEY  
OF THE  
MOON

THE SPRINGS  
THAT MADE  
SONOMA COUNTY  
FAMOUS





**A** GUA CALIENTE SPRINGS are rapidly becoming world famous because their waters are one of the few so far discovered in America that are radio-active. Even the first pale faces to explore the North-bay region of California heard fascinating Indian legends of the remarkable curative properties of the waters of these springs. Their healing powers were recognized and their fame spread throughout the Pacific Coast long before their waters were harnessed and developed for the modern requirements of man.

### **HOTEL ADEQUATE AND COMFORTABLE**

**A** THOROUGHLY modern, fire-proof hotel, beautifully located in the very center of Jack London's historic "Valley of the Moon," with adequate and comfortable facilities, extends a hearty welcome to the traveler. No better place could be found for a rest. All rooms are large and airy and lead directly on to spacious verandas and sun porches, and may be had either singly or en suite. Every room has running hot and cold radio-active sulphur water. Caliente Mineral Water, bottled from these springs and excelled by none in medicinal qualities, is available at all times for each and every guest. Cottages can be had by those who prefer them to the hotel. The dining-room

## SWIMMING TANK—AGUA



service represents the best that experienced chefs and the markets can give.

### HEALTH-GIVING WATERS

ON another page will be found an analysis of the mineral content of the water of Agua Caliente Springs. Impregnated with radium, which almost magically gives new strength and banishes many diseases, these waters are unexcelled in the treatment of nervousness and nerve troubles. Special emphasis is placed upon the needle baths which challenge rheumatism and liver, kidney and stomach disorders. Complete cure of these diseases is almost guaranteed to those who consistently take the baths and treatment at Agua Caliente Springs.

A mammoth swimming tank, 65 by 80 feet, filled with fresh, clean, hot sulphur water is only one of the many attractions maintained in connection with the hotel. Nowhere will be found a better equipped bath house. In addition to the big plunge and needle baths, there are plenty of tub baths. A solarium, or sun bath, is a new and important feature of the institution.

All of the baths are supplied with the radio-active hot sulphur water which comes from the ground at a temperature of from 100 to 115 degrees. No single thing, no matter

## AGUA CALIENTE SPRINGS



how trivial or apparently unimportant, has been neglected in preparing for the accommodation and enjoyment of the guests of Agua Caliente Springs.

### WATERS THAT MAKE A PERFECT SKIN

**D**O YOU wish a soft, velvety, alluring skin? The radioactive sulphur baths at Agua Caliente Springs, in their action upon the skin, will both amaze and please. A sallow or blotchy complexion, under the influence of the mineral water and baths, will change to that soft, velvety skin that is the admiration of all eyes. Agua Caliente Springs are not surpassed for the complexion and for skin diseases.

### AMUSEMENTS

**D**ANCING and tennis are available to all guests. Golf links close by. Hunting and fishing are near at hand. The entire surrounding country is one of rare beauty and charm. Roads lead in almost every direction and the distances to neighboring towns are comparatively nothing.

Sonoma is 3 miles away, Glen Ellen 3 miles, Petaluma 14 miles and Santa Rosa 16 miles. Hooker Falls, not far distant, is well worth a visit.



### ATTRACTIVE RATES

Special Rates for Families.

### HOW TO REACH AGUA CALIENTE SPRINGS

**F**ROM San Francisco take Northwestern Pacific Railway via Sausalito ferry.

Automobiles from San Francisco take Sausalito or Golden Gate Ferry and follow highway to Ignacio, thence Black Point cutoff to Sonoma and to Agua Caliente Springs. From Oakland, Berkeley and Alameda, drive to Richmond and take San Rafael ferry and thence on highway to Black Point cutoff, thence to Sonoma and Agua Caliente; also via Carquinez Bridge to Vallejo, Napa, Sonoma, thence to Agua Caliente.

Transient auto parties will be welcome; excellent meals served. You will be welcome at Agua Caliente Springs.

Wire or Write for Reservations or Rates.

T. H. CORCORAN, *Proprietor*

## AGUA CALIENTE

*Sonoma County, California*

*Telephone Sonoma 21*

# AGUA CALIENTE SPRINGS

Is One of the Few in America that has Radio-  
active Hot Mineral Water



No staging—the hotel is right at the depot.  
Four trains each way daily.  
Health, Good Eats, Rest.

Modern bath house and swimming tank.  
Needle, tub, plunge, shower and electric  
light baths.  
Swimming teachers and masseurs.

Four mails daily.  
Post office in hotel.  
Long distance telephone service.  
Hunting and fishing in season.



AT  
**Agua Caliente Springs**

IT IS—

Always cool—never cold.  
Only 45 miles from San Francisco.  
Easy of access.  
Always beautiful and inviting.



## Bottled Sulphur Mineral Water

The sulphur waters here are among the strongest to be found anywhere, and come from five different hot springs ranging in temperature from 110° to 115°, and have for a great many years been accomplishing wonders in the curing of all forms of rheumatism, of stomach troubles, skin and blood diseases and diabetes. The analysis follows:

### Analysis of Agua Caliente Springs Water

<i>Solids Held in Solution</i>	<i>Grains per U. S. Gallon</i>
Potassium Sulphate (Sulph. of Potash).....	4.647
Potassium Chloride (Chlo. of Potash).....	.689
Sodium Chloride (Common Salt).....	24.209
Sodium Carbonate (Sal Soda).....	1.405
Lithium Carbonate (Carbite of Lithia).....	1.000
Calcium Carbonate (Carbite of Lime).....	1.450
Magnesium Carbonate (Carbite of Mag.)....	2.100
Ferrous Carbonate (Carbite of Iron).....	.090
Silica .....	.085
Boric Acid .....	.067
Sulphuretted Hydrogen .....	1.000
Crenic and other Organic Acids.....	2.201

TOTAL ACIDS .....38.943

(Signed) J. Bruce Clifford, Ph. D., M. D.,  
Analyst

# AGUA CALIENTE SPRINGS

ONLY 45 MILES  
FROM SAN FRANCISCO

IN THE  
VALLEY  
OF THE  
MOON

THE SPRINGS  
THAT MADE  
SONOMA COUNTY  
FAMOUS

